

SUSANNA

AN ORATORIO

As it was perform'd at the

THEATRE-ROYAL in Covent Garden, London

1749

Set to Musick by GEORGE-FREDERICK HANDEL, Esq.

Edited by

Nicholas McGegan, John Roberts, and Eleanor Selfridge-Field

OBOE 2

1. Overture

Musical score for Oboe 2 - 1, measures 1-114. The score is written in treble clef with a common time signature (C). It features various musical notations including slurs, accents, and dynamic markings. A key signature change to one sharp (F#) occurs at measure 107. The tempo instruction "Staccato e non troppo allegro" is placed above the staff at measure 22. Measure numbers 10, 22, 37, 45, 53, 65, 73, 86, 93, 100, and 107 are indicated at the beginning of their respective lines.

Oboe 2 - 1

114

121

131 *Lentement*

136

141

2. Chorus

Largo

13

24

36

49

60

71

Nos. 3 - 7 Tacit

8. Air

A tempo giusto

Musical score for Oboe 2-3, 'Air' movement, measures 1-84. The score is written in treble clef with a key signature of two flats (B-flat and E-flat) and a common time signature (C). The tempo is marked 'A tempo giusto'. The score consists of ten staves of music, each starting with a measure number. The first staff begins with a whole rest followed by a quarter rest, then a series of eighth and sixteenth notes. The second staff starts at measure 5 and includes a piano (*p*) dynamic marking. The third staff starts at measure 10 and includes a fermata over the first two measures. The fourth staff starts at measure 15 and includes a forte (*f*) dynamic marking and a sixteenth-note triplet. The fifth staff starts at measure 26 and includes a four-measure rest and a five-measure rest. The sixth staff starts at measure 39 and includes a forte (*f*) dynamic marking, a piano (*p*) dynamic marking, and a triplet. The seventh staff starts at measure 47 and includes a five-measure rest. The eighth staff starts at measure 56 and includes a forte (*f*) dynamic marking and a five-measure rest. The ninth staff starts at measure 66 and includes a two-measure rest. The tenth staff starts at measure 73 and includes a piano (*p*) dynamic marking and a six-measure rest. The final staff starts at measure 84 and includes a forte (*f*) dynamic marking, a piano (*p*) dynamic marking, and a triplet.



Nos. 9 - 27 Tacit

28. Chorus

Grave



Andante



64

73

Grave
83

A tempo ordinario

94

100

109

113

118

125

129

134

139



Nos. 29 - 47 Tacit

48. Chorus

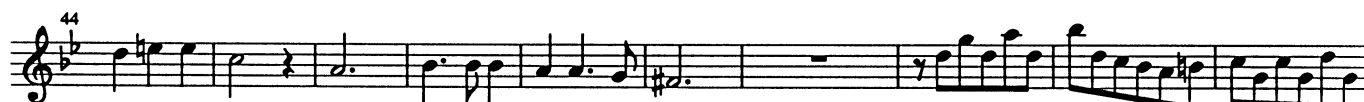
Andante



Nos. 49, 50 Tacit

51. Chorus

Andante larghetto



52. Chorus

Allegro

Musical score for Chorus 52, marked Allegro. The score is written in treble clef with a common time signature (C). It consists of seven staves of music. The first staff begins with a whole rest followed by a series of eighth and sixteenth notes. The second staff starts at measure 7 with a whole rest and then continues with eighth and sixteenth notes. The third staff starts at measure 13 with eighth and sixteenth notes. The fourth staff starts at measure 18 with eighth and sixteenth notes. The fifth staff starts at measure 23 with eighth and sixteenth notes. The sixth staff starts at measure 29 with eighth and sixteenth notes. The seventh staff starts at measure 34 with eighth and sixteenth notes and ends with a double bar line.

Nos. 53 - 61 Tacit

62. Chorus

Larghetto

Musical score for Chorus 62. The score is written in treble clef with a common time signature (C). It consists of three staves of music. The first staff begins with a whole rest followed by a series of eighth and sixteenth notes, marked with a forte (f) dynamic. The second staff starts at measure 10 with eighth and sixteenth notes. The third staff starts at measure 19 with eighth and sixteenth notes and ends with a double bar line. The tempo marking changes from Larghetto to Allegro at the end of the third staff.

Musical score for Oboe 2, measures 35-60. The score is written in a single staff with a treble clef and a key signature of two flats (B-flat and E-flat). The time signature is 3/4. The music consists of six lines of notation, each starting with a measure number (35, 40, 45, 50, 55, 60). The notation includes various rhythmic values such as eighth and sixteenth notes, rests, and accidentals (sharps and naturals).

Nos. 63 - 67 Tacit

68. Air

Allegro

Musical score for Oboe 2, measures 1-43. The score is written in a single staff with a treble clef and a key signature of two sharps (F# and C#). The time signature is 3/4. The music consists of four lines of notation, each starting with a measure number (1, 11, 21, 43). The notation includes various rhythmic values such as eighth and sixteenth notes, rests, and accidentals (sharps and naturals).

54

64

73

86

95

107

120

167

177

191

p

f

p

f

Detailed description: This is a page of a musical score for Oboe 2, spanning measures 54 to 191. The score is written in treble clef with a key signature of two sharps (F# and C#). The music consists of ten staves of notation. Measure numbers are placed at the beginning of each staff: 54, 64, 73, 86, 95, 107, 120, 167, 177, and 191. The notation includes various rhythmic values, rests, and articulation marks. Dynamic markings include *p* (piano) and *f* (forte). There are also some performance instructions such as *5*, *4*, and *37* written below the staff lines. The score concludes with a double bar line at measure 191.

69. Chorus

Musical score for Oboe 2, measures 1-84 of Chorus 69. The score is written in treble clef with a key signature of two sharps (F# and C#) and a 3/4 time signature. The music begins with a dynamic marking of *f* (forte) at measure 1. The score consists of eight staves of music. Measure numbers 17, 29, 41, 53, 63, 72, and 84 are indicated at the start of their respective staves. The piece concludes with a double bar line at measure 84.

Nos. 70- 73 Tacit

74. Chorus

Musical score for Oboe 2, measures 1-19 of Chorus 74. The score is written in treble clef with a key signature of two sharps (F# and C#) and a 3/4 time signature. The music begins with a dynamic marking of *f* (forte) at measure 1. The score consists of two staves of music. Measure numbers 19 and 19 are indicated at the start of their respective staves. The piece concludes with a double bar line at measure 19.

