

J. S. Bach

Ich elender Mensch, wer wird mich erlösen

Cantata for the Nineteenth Sunday after Trinity

BWV 48

Continuo

1. Chor

11 7 6 7^b 6 5

22

34

46

57

69

81

92

103

116

127

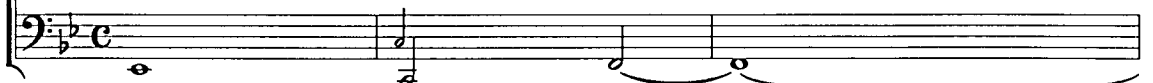
2. Recitativo

Alto



O Schmerz, o E-lend! so mich trifft, in-dem der Sün-den Gift bei mir in

Continuo



8 7^b 9^b 6 4⁺ 3^b

4



Brust und A-dern wü-tet. Die Welt wird mir ein Siech- und Ster-be-haus, der Leib muss sei-ne



6 5^b

7



Pla-gen bis zu dem Gra-be mit sich tra-gen. Al-lein, die See-le füh-let das stärk-ste

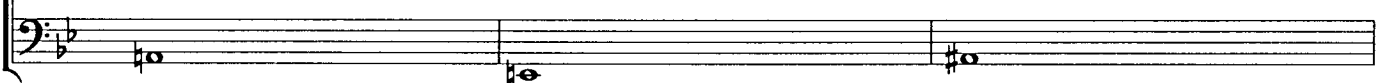


7^b 5 6 4⁺ 3^b 6^b 4 5 3 6 4 2 7^b 5^b

10



Gift, da-mit sie an-ge-ste-cket; d'rum, wenn der Schmerz den Leib des To-des

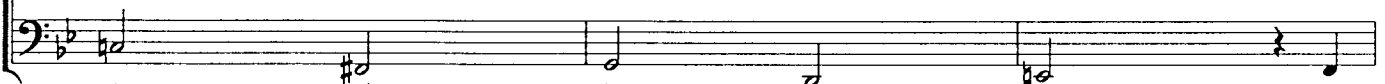


6 4⁺ 2⁺ # 7^b 5

13



trifft, wenn ihr der Kreuz-kelch bit-ter schme-cket, so treibt er ihr ein brün-stig Seuf-zen aus.



6 4⁺ 2 7^b 5 b 6 5^b 7^b 5

16



3. Choral

6

7b 7b

Musical notation for section 3, Choral, measures 1-6. The notation is in bass clef with a key signature of two flats and a common time signature. It features a melodic line with several notes marked with a fermata. Below the staff, the measure numbers 6 and 7b 7b are indicated.

4. Aria

12

23

35

47

59

71

83

p

f

f

Musical notation for section 4, Aria, measures 1-83. The notation is in bass clef with a key signature of two flats and a 3/8 time signature. It consists of a continuous melodic line with various dynamics and articulations. Measure numbers 12, 23, 35, 47, 59, 71, and 83 are marked at the beginning of their respective lines. Dynamics include *p* (piano) and *f* (forte). Fingerings are indicated with numbers 1-5. The piece concludes with a double bar line at measure 83.

5. Recitativo

Tenore

Continuo

3

4
2

6
4+
3b

5

8
2

8

See-le stark zu ma-chen.

7. Choral

The image shows a musical score for a Continuo instrument, specifically for the sixth part of a set. The score is written on two staves in bass clef, with a key signature of one flat (B-flat) and a common time signature (C). The first staff begins with a series of notes: G2, F2, E2, D2, C2, B1, A1, G1, F1, E1, D1, C1. This is followed by a sequence of notes: G1, F1, E1, D1, C1, B0, A0, G0, F0, E0, D0, C0. The second staff begins with a series of notes: G1, F1, E1, D1, C1, B0, A0, G0, F0, E0, D0, C0. This is followed by a sequence of notes: G0, F0, E0, D0, C0, B0, A0, G0, F0, E0, D0, C0. The score includes various musical notations such as slurs, accents, and dynamic markings. The first staff has a '6' above the first measure, a '5' below the second measure, a '#' above the third measure, a '7' above the fourth measure, and a '6' above the fifth measure. The second staff has a '6' above the first measure. The score ends with a double bar line.